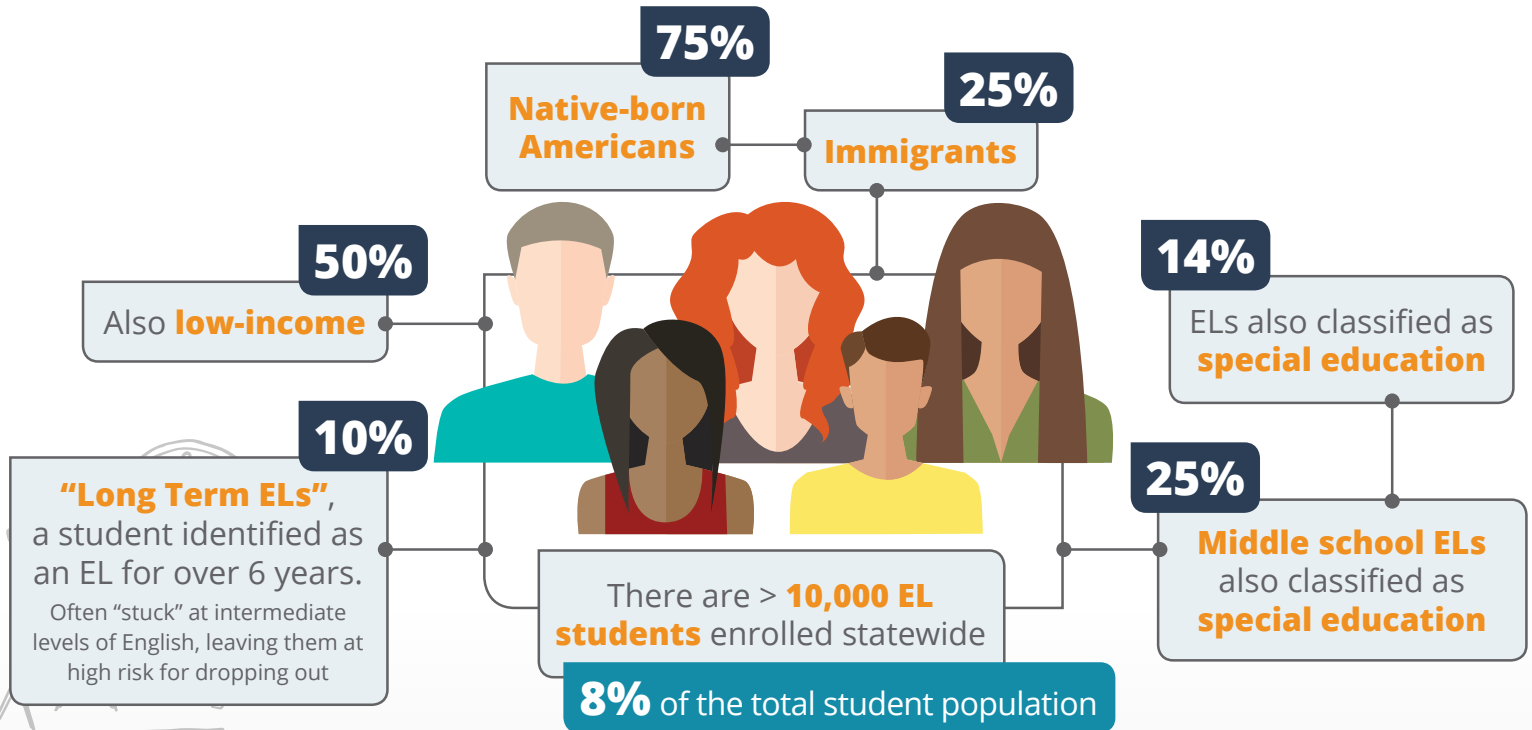




WHO ARE ENGLISH LEARNERS IN DELAWARE'S SCHOOLS?

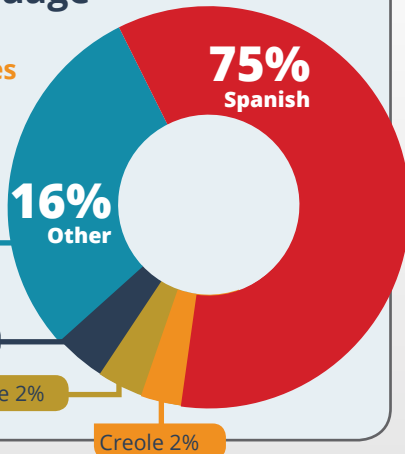
English Learners (ELs) are a diverse group of students representing numerous languages, cultures, ethnicities, nationalities, and social, economic, and educational backgrounds.



Home Language

There are **97 native languages** spoken by Delaware ELs

There are more than 90 languages spoken by less than 1 percent of ELs



78% Elementary (K-5)

% of Total ELs by School Grade Level

10% Middle School (6-8)

12% High School (9-12)

EL
English learner

ELL
English language learner

LEP
Limited English proficient

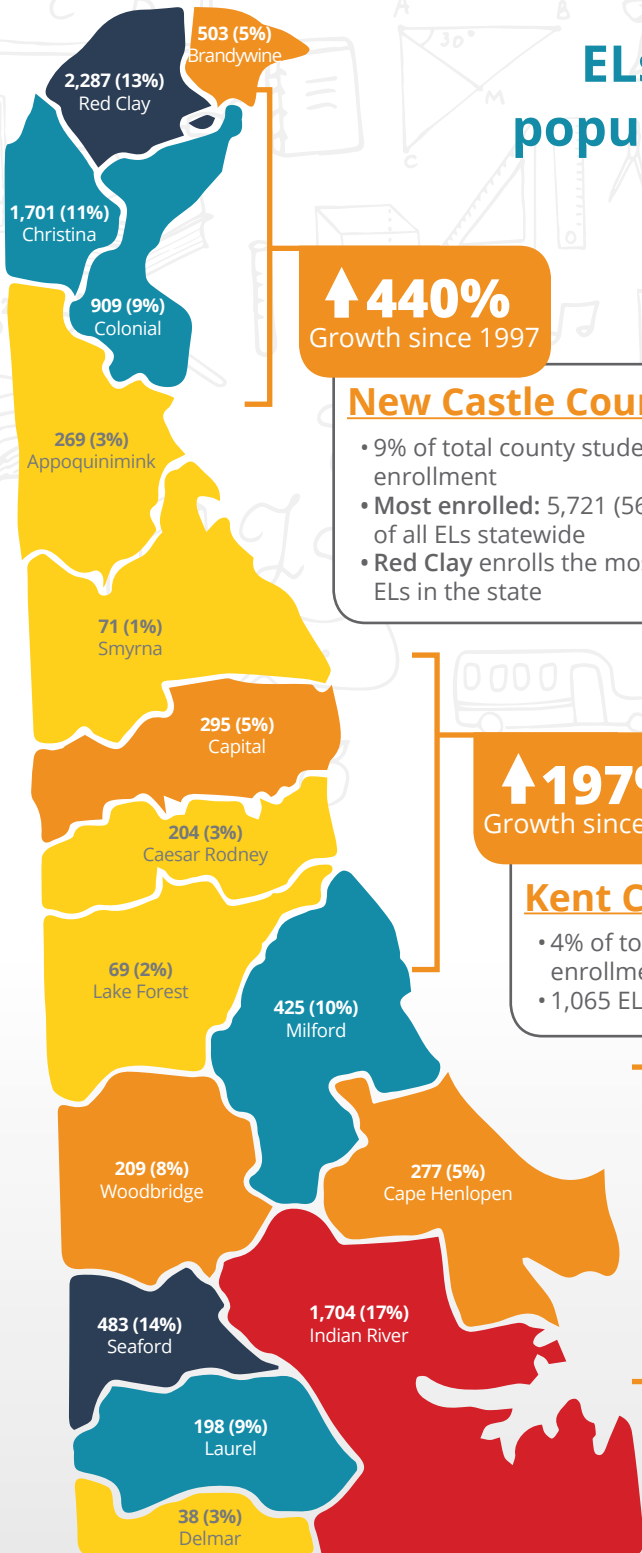
ESL
English as a Second Language

There are many identical terms used to formally describe this group of students.

Delaware education regulations say:

"English learners are students with limited English proficiency who, because of foreign birth or ancestry, speak a language other than English. ELs either comprehend, speak, read, or write little or no English" when they enroll in public school.

ELs are the fastest growing student population. They are enrolled in every district and charter in the state.



↑ 440%
Growth since 1997

New Castle County

- 9% of total county student enrollment
- Most enrolled: 5,721 (56%) of all ELs statewide
- Red Clay enrolls the most ELs in the state

↑ 197%
Growth since 1997

Kent County

- 4% of total county student enrollment
- 1,065 ELs enrolled

↑ 597%
Growth since 1997

Sussex County

- Highest concentration: 11% of total county student enrollment
- 2,910 ELs enrolled
- Fast growing
- Indian River (17%) and Seaford (14%) enroll the highest concentrations of ELs in the state

428%
Over 20 Years

State of Delaware

From 2015 to 2016, ELs grew 15%, while the entire Delaware student population only grew 1%

Public School Choice: ELs are less likely to elect to attend a charter or vo-tech school

Charter

4% of ELs attend charter schools compared to 8% of all students.
La Academia Antonia Alonso (117 EL students) and Las Americas Aspira Academy (190 EL students) serve the most ELs (about 25% of the schools' enrollment)

Vo-tech

4% of all high school ELs (54 students) attend vo-tech schools compared to 5% of all high school students

Note: Other choice options (within district or cross-district) not captured

Map legend: Number of ELs and ELs as % of total 2015-16 district student enrollment



Note: ELs as a percentage of the total 2015-16 student enrollment was calculated for districts and charters using the end-of-year EL count and the September 30th total student enrollment count. This reflects the growth in ELs (over 2,000 students) but not the total change in student enrollment during the 2015-16 school year.

Source: Delaware Department of Education 2015-16 English Learners Annual Report.



Visit <http://bit.ly/ELsInDE> for more information on ELs in Delaware.