

## WHEN STUDENTS SUCCEED

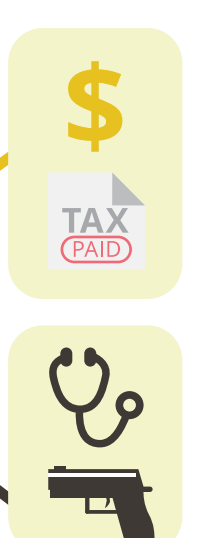
# WE ALL WIN

### BENEFITS OF EDUCATION

#### EARLY LEARNING

**\$4-\$9 in returns for every dollar invested** in high-quality early learning programs for low-income children.

Program participants followed into adulthood benefited from **increased earnings** while the public saw **reduced special education, welfare, and crime costs**, and **increased tax revenues** from program participants later in life.



### MISSED OPPORTUNITIES

#### WORD GAP “”



By age 4, children from middle to high income families are exposed to approximately **30 million more words** than children from families on welfare.

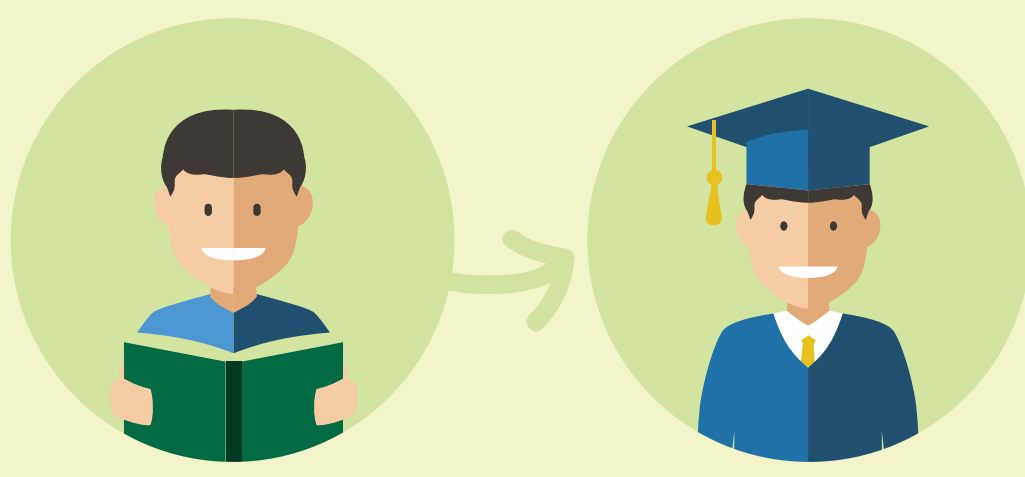
### COST OF SPECIAL EDUCATION

Special education costs nearly **2X as much as regular classroom education**, but early intervention can decrease special education costs by **40%**.



### 3RD GRADE LITERACY MILESTONE

A child who can **read on grade** level by 3rd grade is **4X more likely to graduate** by age 19 than a child who does not read proficiently by that time.



### LOST ECONOMIC POTENTIAL

High school drop-outs typically earn **\$8,000 less annually**, compared to high school graduates.



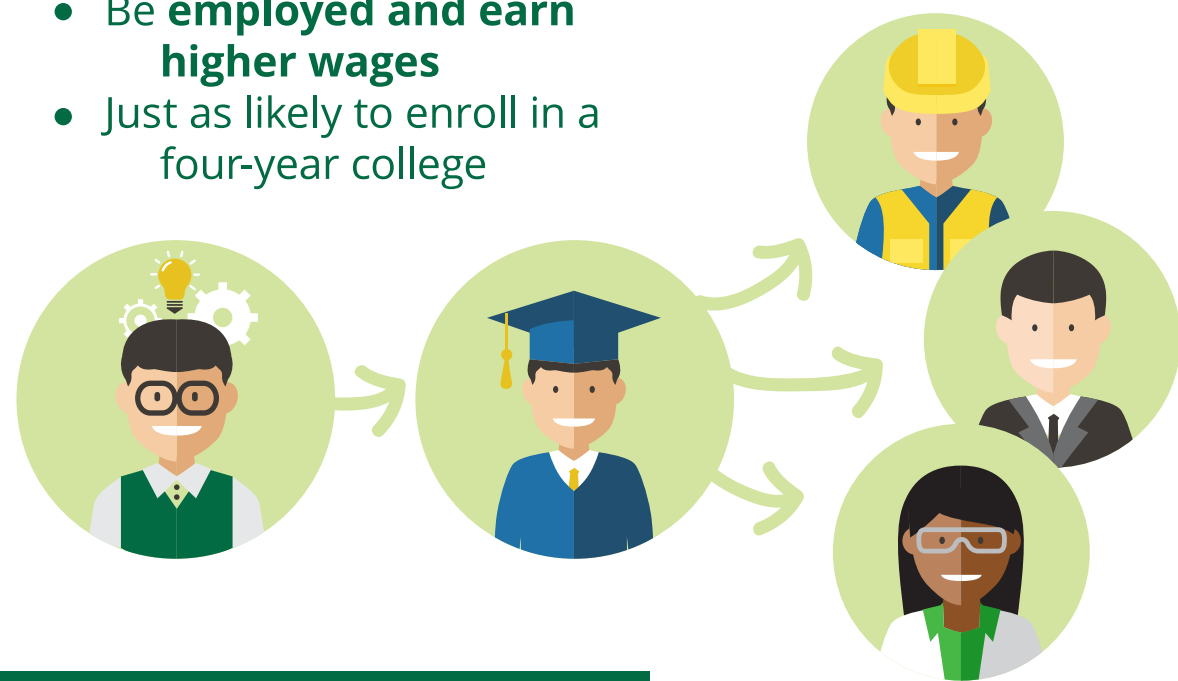
In Delaware, **high school drop-outs** are **2X** as likely as high school graduates, and **6X** as likely as four-year college graduates, **to live in poverty**.



### CAREER & TECHNICAL EDUCATION

Students who take just one career and technical education course above the average are:

- More likely to **graduate**
- Enroll in a **two-year college**
- Be **employed and earn higher wages**
- Just as likely to enroll in a four-year college

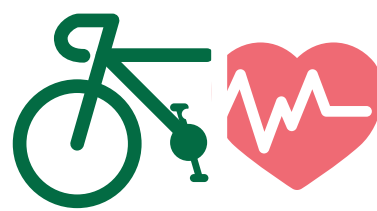


### HIGH LEVELS OF EDUCATIONAL ATTAINMENT

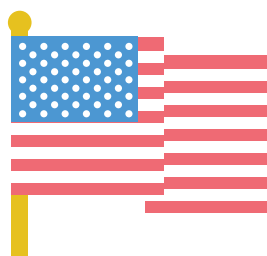
Higher levels of education correlate with **higher earnings** and **lower unemployment rates**.



Adults with higher levels of education are more likely to enjoy healthier lifestyles, **reducing health care costs** as they exercise more, smoke less, and experience lower rates of obesity.



Adults with higher levels of education are **more active citizens, better understanding political issues and voting**.



And are more likely to **move up the socioeconomic ladder**.



### COLLEGE REMEDIATION & DROPOUTS

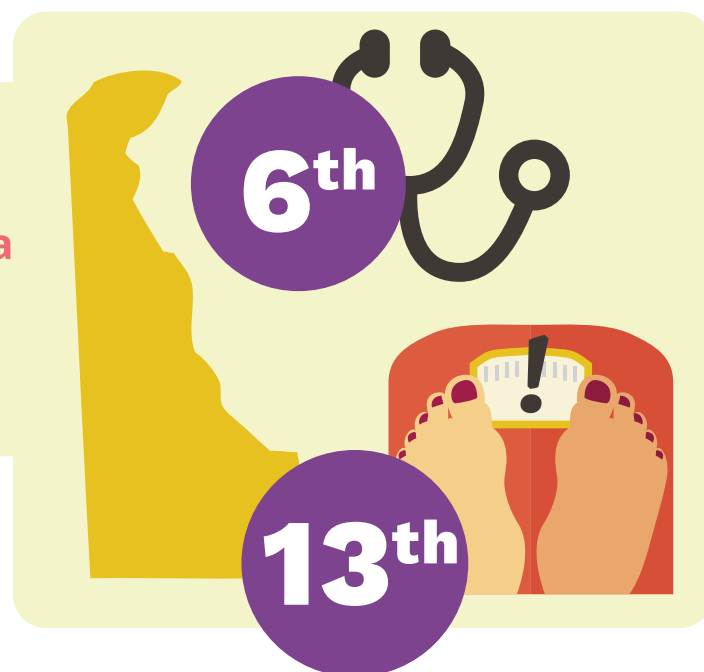
Over **40%** of Delaware public high school graduates attending Delaware colleges need remediation.

Remediation is expensive and courses don't count toward graduation.



### HEALTH CARE SPENDING

Delaware **ranks 6th** nationally on **health spending per capita (\$8,480)** and **ranks 13th** nationally for **obesity**.



### PRICE OF PRISON

In **Delaware**, the average annual **cost per inmate is \$32,967**, more than **twice** the average annual **per-pupil funding** for students.

