



100 West 10th Street, Suite 704
Wilmington, Delaware 19801
T: 302.571.1536
F: 302.571.1538
www.rodelfoundationde.org

Additional Detail: Early Childhood Education

| November 2015



Supporting World Class Schools for Delaware

- Achievement gaps start early: Differences in the size of children's vocabularies first appear at 18 months of age, based on whether they were born into a family with high education and income or low education and income.
- Economists estimate a \$4 to \$9 return on investments for every dollar spent on high quality early education—in reduced health care, special education, incarceration costs, and increased productivity and tax revenues.
- Delaware has made significant investments in early childhood education infrastructure in recent years, including \$22 million from the governor's office and state legislature in 2011, and \$49 million from the Race to the Top-Early Learning Challenge in 2012.
- Delaware has increased access to quality early learning opportunities, with more than 10,000 children with high needs served by highly rated Stars early learning programs.

Early learning presents both a significant opportunity for positive impact and substantial risk of missed opportunities and achievement gaps.

Comprehensive Birth to Age Eight Approaches

Rationale

Brain Development:

Early experiences shape the brain's architecture and set the stage for a child's lifelong success

Economic Development:

Early childhood development is economic development, generating multiple benefits including better learning outcomes, decreased crime and incarceration rates, reduced health care costs, and improved social welfare expenditures, among others



Structure

Structural elements which influence birth to age eight include:

- Early learning and K-2 standards and alignment
- Incorporation of social and emotional learning
- Increased accountability

Early Educational Success

High-quality early childhood programs are essential to the overall effectiveness of public education by:

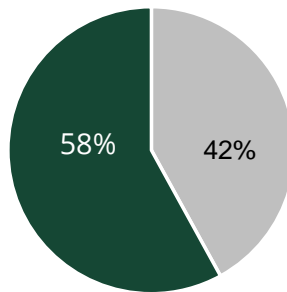
- Significantly improving early literacy, language, and math skills
- Decreasing special education placements by nearly 50 percent through second grade

A child's experiences from birth to grade three are critical to their literacy development.

Stage	Name	The Learner
Stage 0 Birth to G1	Emergent Literacy	Gains control of oral language; relies heavily on pictures in text; pretend reads; recognizes rhyme
Stage 1 Beginning G1	Decoding	Grows aware of sound/symbol relationships; focuses on printed symbols; attempts to break code of print; uses decoding to figure out words
Stage 2 End of G1 to end of G3	Confirmation and Fluency	Develops fluency in reading; recognizes patterns in words; checks for meaning and sense; knows a stock of sight words
Stage 3 G4–G8	Learning the New (Single Viewpoint)	Uses reading as a tool for learning; applies reading strategies; expands reading vocabulary; comprehends from a singular point of view
Stage 4 HS and Early College	Multiple Viewpoints	Analyzes what is read; reacts critically to texts; deals with layers of facts and concepts; comprehends from multiple points of view
Stage 5 Late College and Graduate School	A Worldview	Develops a well-rounded view of the world through reading

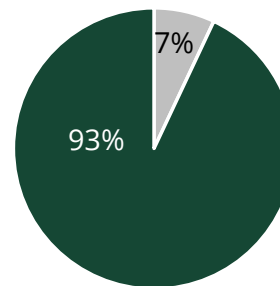
Delaware has an estimated 67,787 early learners from birth through age five; their needs vary greatly.

Low-income
(28,509)



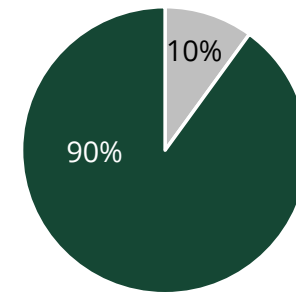
■ Low-income ■ Not low-income

Disabilities or
Developmental Delays
(4,962)



■ Disabilities or developmental
delays
■ No disabilities or
developmental delays

English learner
(6,779)



■ English learner
■ Native English speaker

Note: Low-income is defined as children under five years old in families who have an income of up to 200 percent of the Federal Poverty Level. English learner is defined as children from birth through kindergarten entry who have a home language other than English. Disabilities or developmental delays are defined as children from birth through kindergarten entry who have an Individual Family Service Plan or an Individual Education Plan.

Source: Early Learning Challenge Annual Performance Report. (2013). Year Two Report. <http://www2.ed.gov/programs/racetothetop-earlylearningchallenge/rtt-aprreportfinal112614.pdf>

There are many different pathways and programs that early learners may be a part of before they arrive at kindergarten.

Home-Visiting Program

- Parent education to families with first-born children
- Monthly visits from a trained parent educator
- Information about child development and strategies to promote and facilitate their children's development

Early Head Start

- Serve low-income pregnant women, infants, toddlers, and their families
- Provides both home-based and center based services
- Comprehensive program that offers child development and family support services

Head Start and Early Childhood Assistance Program (ECAP)

- Serve low-income children and families, in a variety of public and nonprofit settings
- Follows federal Head Start regulations
- Monitored every three years
- Required to be licensed by the Office of Child Care Licensing and the Delaware Department of Services for Children, Youth and their Families

Part-Day Preschool

- Serve children between the ages of three and five
- Four hours per day or less
- Include but are not limited to privately owned preschools and other early care and education programs operated by community organizations, church organizations, and public and private schools
- Required to be licensed by the Office of Child Care Licensing and the Delaware Department of Services for Children, Youth and their Families

Child Care Centers

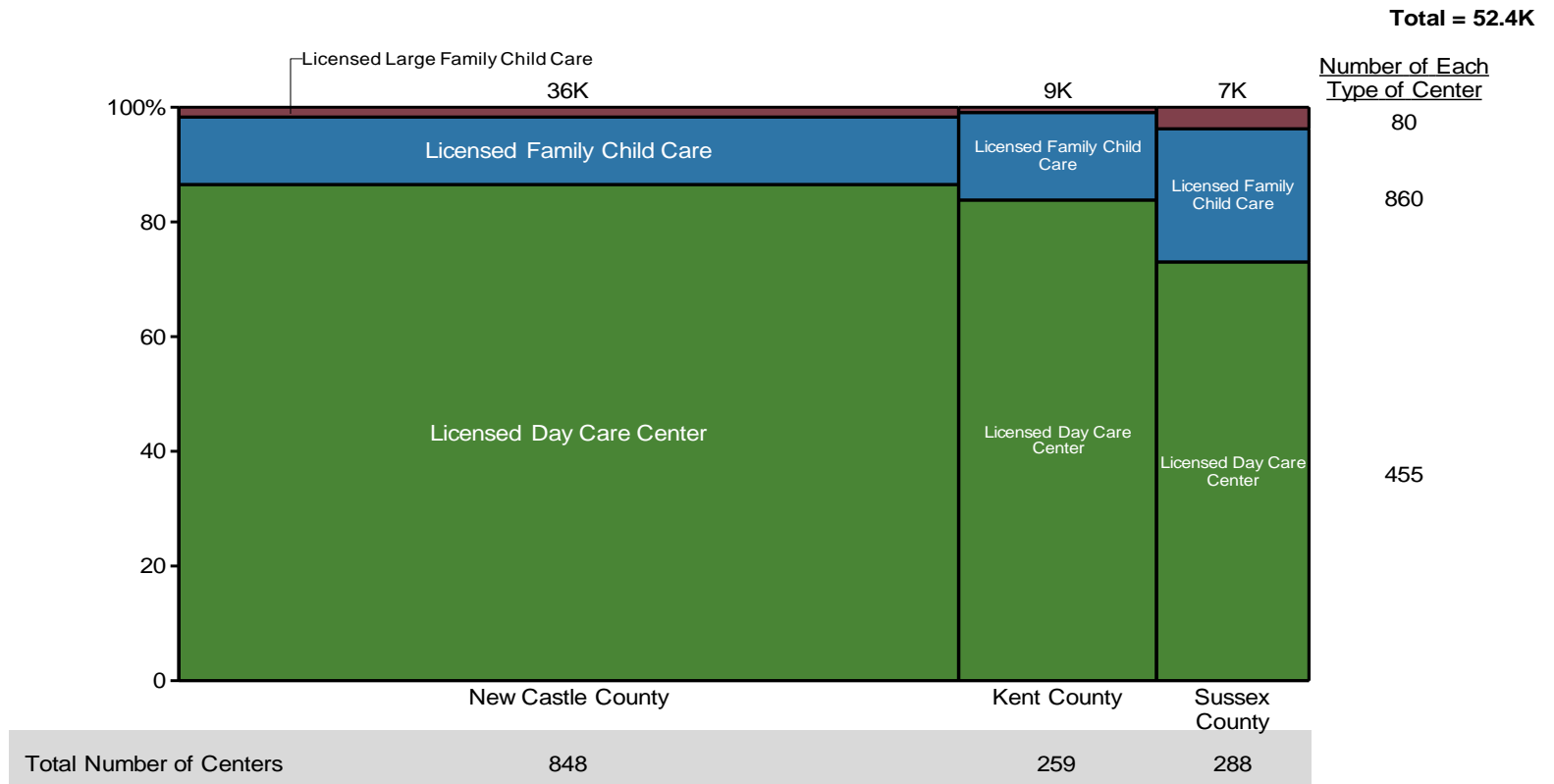
- Offer care for more than 12 children
- More than four hours per day
- Often serve children between the ages of six weeks and 12 years of age (some do not serve infants and toddlers)
- Required to be licensed by the Office of Child Care Licensing and the Delaware Department of Services for Children, Youth and their Families

Family Child Care Programs

- "Child care in a private home"
- Offer child care services to 12 or fewer children
- More than four hours per day
- Regular: Can be licensed to serve six children ages zero to five plus three school-age children
- Large: Can be licensed to serve between seven and 12 children ages zero to five plus three school-age children by using two family child care teachers
- Licensed by the Office of Child Care Licensing, Delaware Department of Services for Children, Youth and their Families

Across the state, there is licensed capacity for 52,000 children in early childhood programs, with the majority in child care centers.

Total Capacity in Early Childhood Programs, October 2012



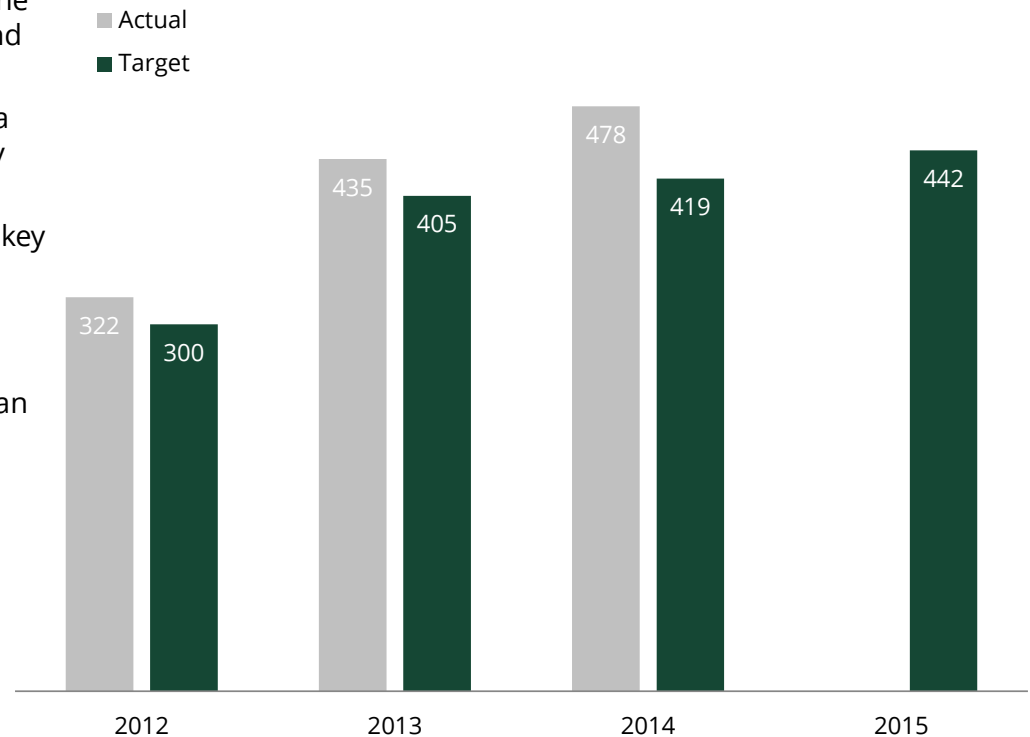
Source: University of Delaware. (2013) Delaware Early Childhood Needs Assessment. <http://www.ipa.udel.edu/publications/EarlyChildhoodNeedsAssessment.pdf>

Delaware has an opt-in quality rating program, Stars, that measures environment and quality. In 2014, Delaware had 478 Star programs, which already exceeds the 2015 target.

Delaware Stars for Early Success

- A Quality Rating and Improvement System (QRIS) used to assess, improve, and communicate the level of quality in early care and education and school-age settings
- Participation is voluntary and demonstrates a program’s commitment to continuous quality improvement
- Ratings for Delaware Stars are based on two key components:
 1. **A formal assessment of the program environment**
 Uses the ERS (Environment Rating Scales) an independent observation of the program’s classroom or home environment
 2. A verification that the program meets **high quality standards** in four areas:
 - Family and Community Partnerships
 - Qualifications and Professional Development
 - Management and Administration
 - Learning Environment and Curriculum

Delaware Stars Early Learner Programs



Source: U.S. Department of Education. (2014). Race to the Top Early Learning Challenge, 2013 Annual Performance Report: Delaware. <http://www2.ed.gov/programs/racetothetop-earlylearningchallenge/annual-performance-reports/de2013apr.pdf>; Delaware Office of Early Learning. (2014). 2012-13 Progress Report; Delaware. http://www.greatstartsdelaware.com/resources/OEL_Progress_Report.pdf. Office of Early Learning. (2015). Delaware Early Learning Challenge Summary of Success – Year 3 (2014). <http://www.greatstartsdelaware.com/resources/ELC%20Progress%20Brief.pdf>

Delaware's early learning system has four tiers with varying compensation levels; on average, early learning teacher pay lags behind educators in the K-12 system. The average salary for an early learning teacher with a B.A. is \$10,000 below the starting salary for a kindergarten teacher with the same level of education.

Position	# in Delaware	Minimum Education & Early Childhood Education (ECE) Training	Average Pay - Hourly	Average Pay - Annual
ECE Administrator	505	AA/AS (including 12-15 ECE credits)	\$15	\$31,620
Curriculum Coordinator	114	HS plus 15 ECE credits AA/AS (proposed minimum)	\$11	\$22,880
Teacher	2086	Training for Early Care and Education (TECE) 1 & 2 or 9 ECE college credits in specific areas	\$11.50	\$23,920
Assistant Teacher	1364	TECE 1 or 6 ECE college credits in specific areas	\$10.50	\$21,008

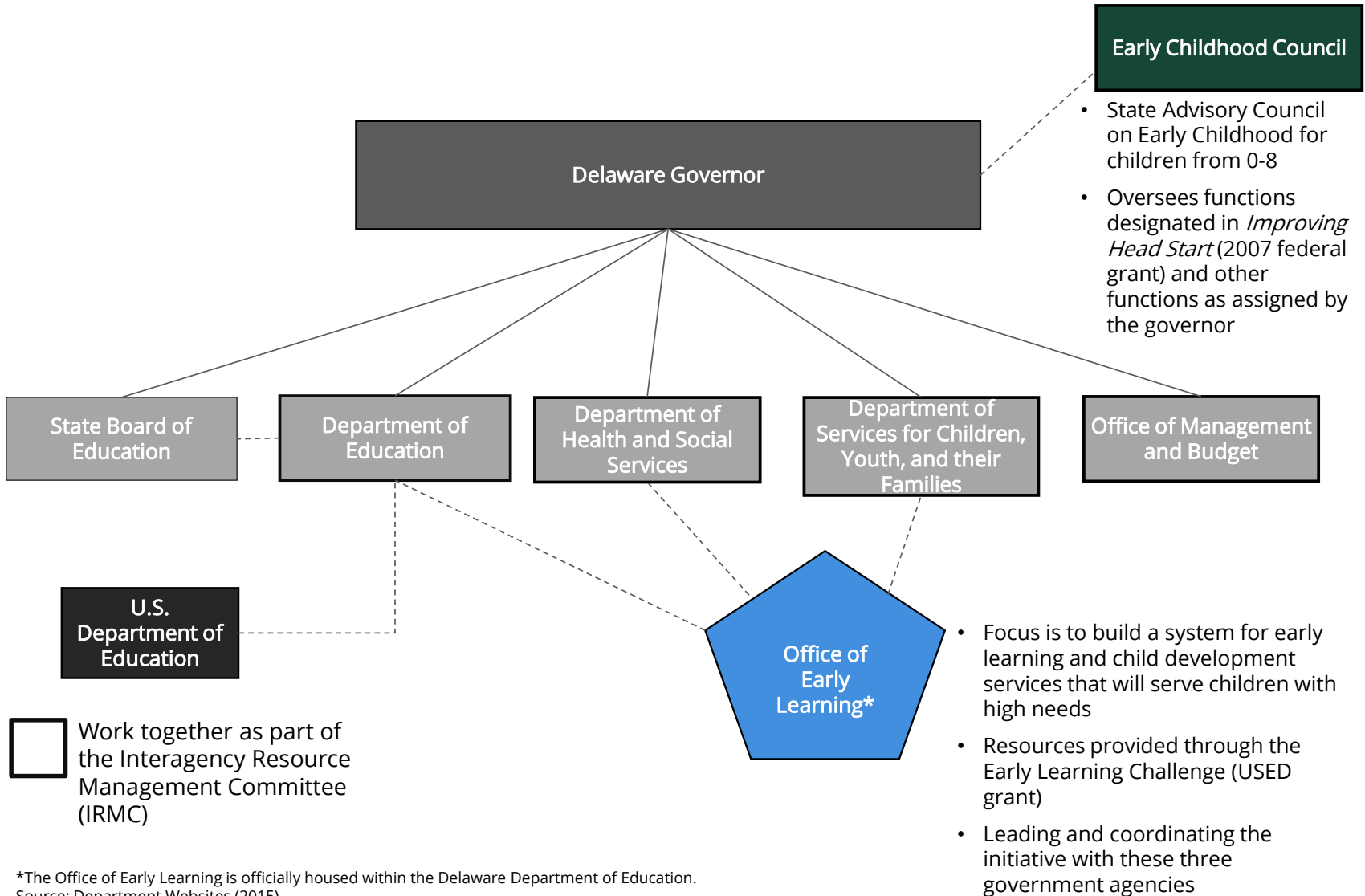
Position	Compensation	Benefits
DE ECE Teacher	\$23,920 (average)	43%-health insurance; 28%-vision; 35%-dental; 58%-vacation; 50%-sick leave; 44%-planning time
National All ECE Teachers	\$22,000 (median)	75%-health insurance
DE Kindergarten Teacher	\$53,000 average \$40,000 starting salary/B.A.	Full
National ECE Teacher/B.A.	\$30,576 (median)	75%-health insurance

Note: In 2015, the federal poverty level for a family of four was \$24,250. ECE teachers are on a year-round calendar while Kindergarten teachers work on a school-based (nine to 10 month) calendar.

Source: Delaware Department of Education (2012). Delaware's Early Childhood Teachers and Administrators.

<http://www.doe.k12.de.us/cms/lib09/DE01922744/Centricity/Domain/146/adminteacher2012-5.pdf>

Many different government agencies and offices are involved in the administration and oversight of ECE.



*The Office of Early Learning is officially housed within the Delaware Department of Education. Source: Department Websites (2015).

Current Landscape: Governance and Funding

Overview

Current
Landscape

How Delaware
Compares

As a result, various departments run different and sometimes parallel programs, making the total available services to families difficult to quantify. The overlap among departments highlights the importance of coordination across agencies.

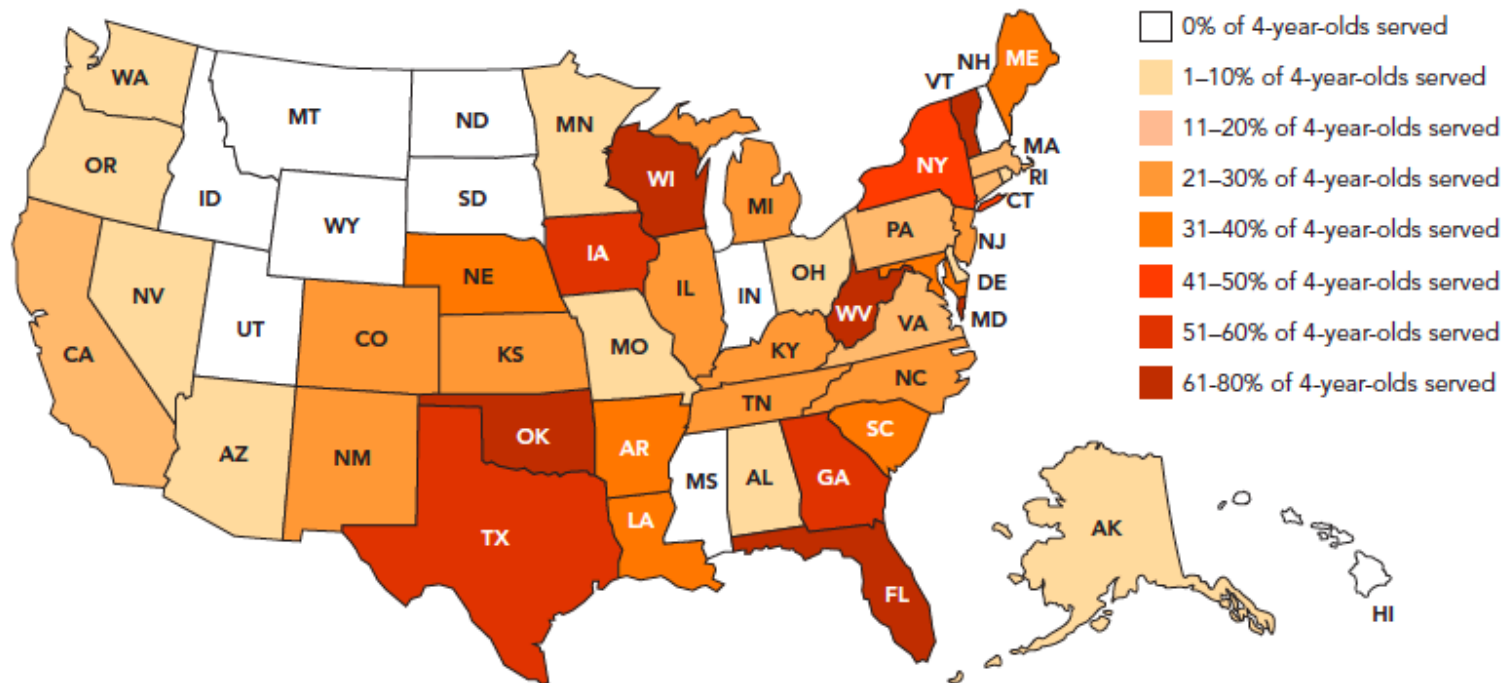
Department of Education	Department of Health and Social Services		DSCYF	Other Agencies
\$37 million, 9 programs	\$269 million, 23 programs		\$4.7 million, 6 programs	\$17 million, 9 programs
<u>Early Care and Education</u> Early Childhood Assistance Program Preschool Special Education Parents as Teachers Institute for Excellence (Professional Development)* Delaware Stars for Early Success* Partnering to Produce Emotional Wellness in Young Children <u>Teaching and Learning</u> Title I <u>Adult Education</u> Even Start <u>School and Community Nutrition</u> Child & Adult Care Food Program	<u>Social Services</u> Purchase of Care (Child Care Subsidy Program) SNAP (food stamps) Child Care Capacity Grant* Child Care Resource and Referral* Relative/Non-Relative Care Training* Resource Center* TANF Home Visiting NFP PAT <u>Children and Families First</u> Nurse-Family Partnership Resource Mothers <u>Medicaid and Medical Assistance</u> Medicaid Delaware Healthy Children Program	<u>Public Health</u> Healthy Women/Healthy Babies Dental Services/Oral Health WIC Early Childhood Program Immunizations Lead Testing Health Systems Protection Newborn Metabolic Screening Newborn Hearing Screening Smart Start/Kids Kare/First Time Parents Tuberculosis Screenings Office of Minority Health <u>Management Services</u> Birth to Three Early Intervention <u>Aging and Adults with Physical Disabilities</u> Joining Generations <u>State Service Centers</u> Relative/Kinship Care Program	<u>Child Care Licensing</u> Child Care Licensing <u>Prevention and Early Intervention</u> Strengthening Families Separating and Divorcing Parent Education Program Promoting Safe and Stable Families Families and Centers Empowered Together (FACET) I Can Problem Solve	<u>Federal grants directly to local grantees</u> Child Care Means Parents in Schools Community Development Block Grant Early Head Start Early Reading First Federally Qualified Health Centers Head Start <u>Parent Information Center of Delaware</u> Parent Information and Training Program <u>Prevent Child Abuse Delaware</u> Child Maltreatment Prevention

*Funds are subcontracted to another organization

Source: Adapted from The Finance Project. (2010). Mapping Fiscal Resources to Map Early Success in Delaware. <http://decc.delaware.gov/files/2015/03/2010-Fiscal-Mapping-Report.pdf>

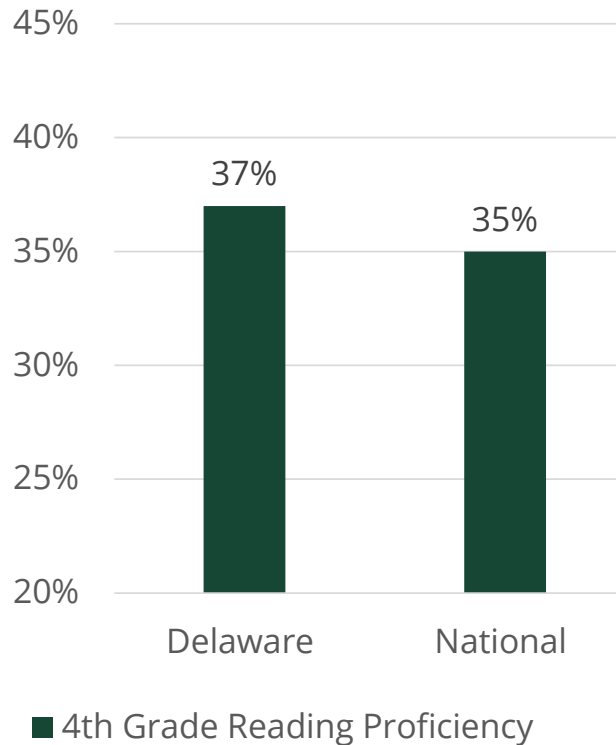
Pre-kindergarten programs have higher programming standards for students and greater requirements for staff education levels. Delaware's state-funded pre-kindergarten is a Head Start "look-alike". The program, called the Early Childhood Assistance Program, is a half-day, part year program for children within 100 percent of the poverty level. It has a limited number of slots and covers approximately 6 percent of four year olds. Delaware has a lower percentage of four year olds served in state pre-kindergarten programs than surrounding states.

Percent of 4-year olds Served in State Pre-kindergarten (2015)

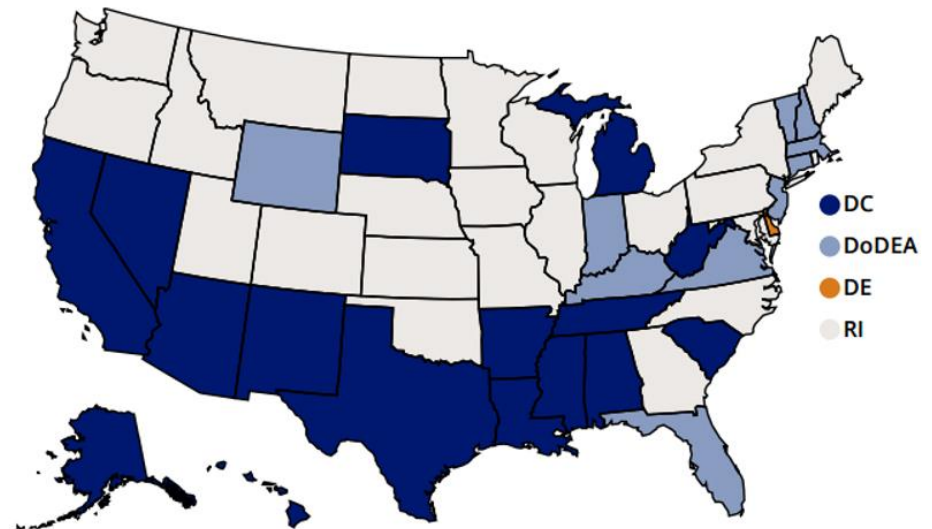


Reading proficiency in early elementary grades is an indicator for a student's future success. Delaware is above the national average for fourth grade reading proficiency; however, less than four out of 10 students are proficient.

4th Grade Reading Proficiency (NAEP 2015)



Delaware's Average 4th Grade Reading Score Compared with the Nation



In 2015, the average score in Delaware (224) was

- light blue: lower than those in 11 states/jurisdictions
- dark blue: higher than those in 17 states/jurisdictions
- light gray: not significantly different from those in 23 states/jurisdictions

DoDEA = Department of Defense Education Activity (overseas and domestic schools)

Note: NAEP reading assessments are administered to a representative sample of students every two years.

Source: National Assessment on Education Progress. (2015). State Snapshot. <http://nces.ed.gov/nationsreportcard/subject/publications/stt2015/pdf/2016008DE4.pdf>

Opportunities to Transform the System

Category	Potential Action Steps	Progress Underway	Supporters
High Quality Early Childhood Programs and Professionals	Require programs receiving public subsidies to achieve a required Star level of quality	<ul style="list-style-type: none"> Stars Quality Rating and Improvement System Compensation, Retention, and Education (CORE) awards 	Vision Coalition of Delaware
	Require all early childhood programs to participate in the Stars Quality Rating and Improvement system		<ul style="list-style-type: none"> Early Childhood Council State Board of Education Vision Coalition of Delaware
	Increase required professional qualifications, associated compensation, and incentives to align with K-12 educators		Vision Coalition of Delaware
	Expand access to existing options by increasing the incentives and supports to professionals and programs in low-income areas		<ul style="list-style-type: none"> Early Childhood Council State Board of Education Vision Coalition of Delaware
	Strengthen higher education partnerships to strengthen rigor and access of early childhood programs		Early Childhood Council
	Establish and incrementally expand voluntary, full-day, high quality prekindergarten for three- and four-year olds		Vision Coalition of Delaware
Aligned and Effective Early Learning System, Birth through 3rd Grade	Develop birth to third grade assessment systems to measure success and target necessary interventions for children as early as possible	<ul style="list-style-type: none"> Early Learner Survey 21 Readiness teams established 	State Board of Education
Sustainable System Improvement	Develop streamlined state governance structure to assure efficient decision-making and ongoing system review	Significant public funding invested to support early-stage infrastructure	<ul style="list-style-type: none"> Early Childhood Council Vision Coalition of Delaware