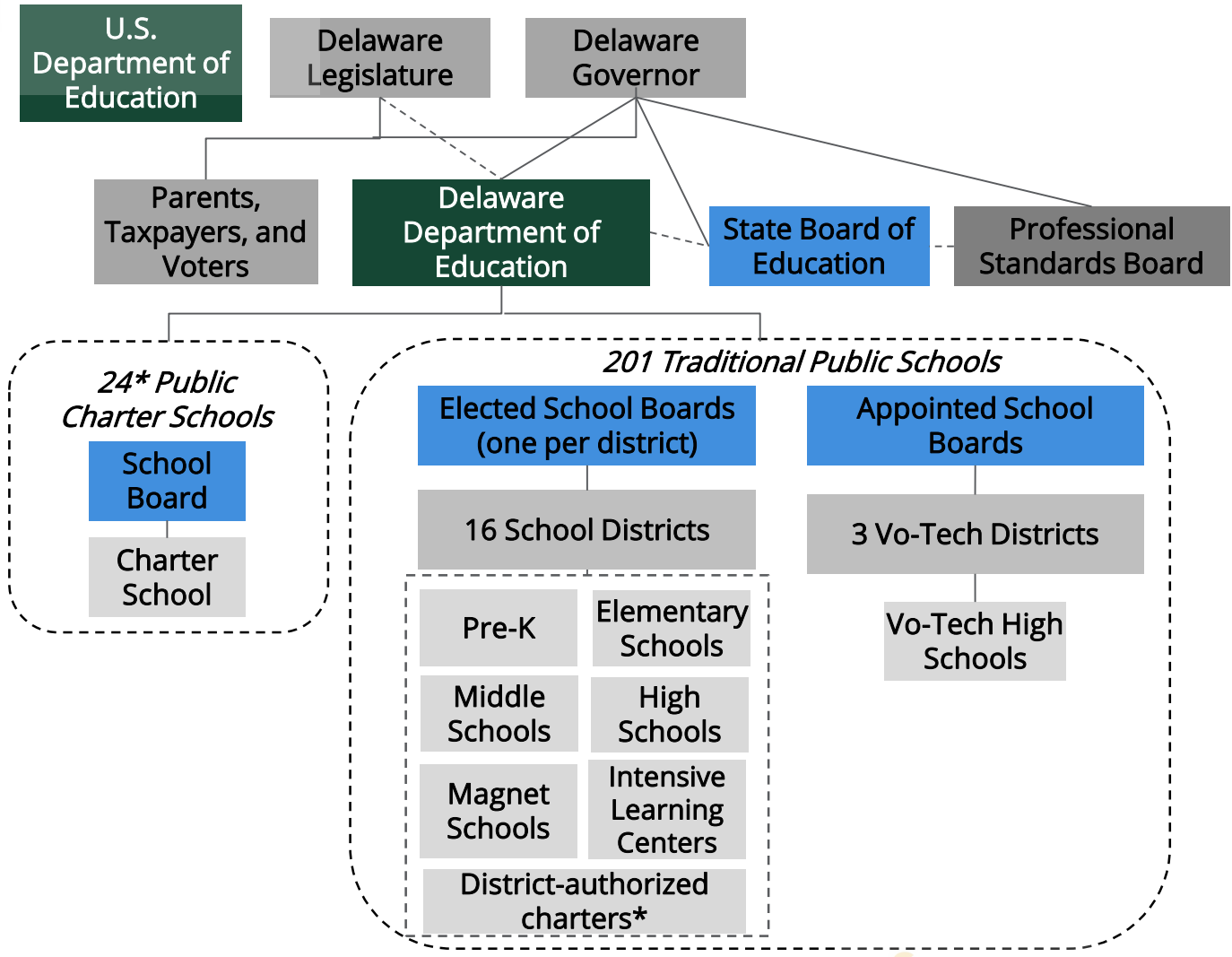


100 West 10th Street, Suite 704  
 Wilmington, Delaware 19801  
 T: 302.571.1538  
 F: 302.571.1538  
 www.rodelfoundationde.org



This graph examines governance of the K-12 system in the 2015-16 school year.



Note: This graph is not inclusive of all governing bodies throughout the entire Delaware school ecosystem.

Adopted from source: The Vision Coalition. (2015). Student Success 2025. [www.visioncoalitionde.org](http://www.visioncoalitionde.org)

\*When looking at governance, the three charters authorized by Red Clay fall under traditional school districts because they are governed by the Red Clay school board.